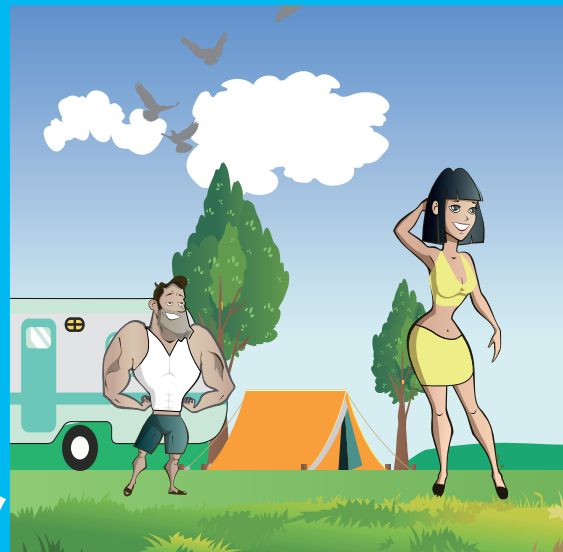


# Trewince Farm HOLIDAY PARK

STRICTLY NO WASHING LINES ON SITE



No Thanks!



Yes Please!

## BOOKING CONDITIONS

### TOURING AND CAMPING RESERVATIONS

All bookings online, any queries please contact Reception.

Please note: **NO REFUNDS** for cancellations.

In the event of leaving early **NO REFUNDS** will be made.

Pitch price includes up to 2 persons, max 6 persons per pitch.

Pitches are available from 2p.m. on the day of arrival and should be vacated by 11am on the day of departure. This condition must be strictly adhered to. No late check-outs.

**Late Arrivals** - please advise if you are expected to arrive after 7.00pm. If we have not been advised of a late arrival we reserve the right to re-let the pitch.

**Dogs** - are permitted on the camping field but only following these strictly enforced conditions:

- They are kept on a lead at all times in all areas;
- They do not foul on the site or dog walks;
- Any complaint regarding dogs which, in the opinion of the management, is justified will result in asking the owner to leave.**

**Trewince Farm Holiday Park is a family run site for families and as such, will not accept bookings from groups of young people.**

### VAT - is included at the current rate.

Trewince Farm Holiday Park and its employees accept no liability for any accident, injury, loss or damage to any persons or property occupying or using any part of the park, however caused. Any person in breach of booking terms, conditions on park rules may at the discretion of the Management, be asked to leave immediately. No refund will be given. Any persons causing offence to other guests at the park may, at the discretion of the Management, be asked to leave immediately. No refund will be given. **We have a strict no noise policy after 10.30pm.**

### Strictly NO washing lines to be erected onsite.

Please DO NOT walk or ride bikes through other pitches. Alcohol only to be consumed on pitch. Always use slabs provided for barbecues. No pit fires. No motorised scooters or segways to be used on the park.

**VISITORS TO THE SITE** - we welcome visitors to the site but would like them to report to the Reception first and we would be happy to direct them to their friends or relatives staying on the site.

### STATIC CARAVANS FOR HIRE

All bookings online, any queries please contact Reception.

Please note: **NO REFUNDS** for cancellations.

Part week bookings are accepted out of high season. The nightly rate is the weekly rate divided by five + cleaning charge.

**In the event of leaving early NO REFUNDS will be given.**

**There is a maximum of 6 Persons only per van. STRICTLY NO PETS** accepted in caravans. **STRICTLY NO SMOKING.**

**Your caravans will be available from 4pm on the day of arrival and you are asked to vacate at 10am on the day of departure.**

Please let us know if you are going to arrive late. If we have not heard from you by 6pm on the day of arrival, we can arrange for late collection of key.

**Trewince Farm Holiday Park is a family run site for families and as such, will not accept bookings from groups of young people.**

Caravans and equipment must be left in a clean condition. All damages and breakages must be reported and paid for, duvets and pillows must remain in the caravans at all times.

We request the visitor to provide **linen and towels.**

Any extra cleaning min £50 charge.

The management reserves the right to enter the caravan in case of emergencies.

Please ensure to take all your personal belongings when you leave for home. The management will not accept responsibility for any items left behind.

Rules of site are displayed in the Reception and Amenity Buildings.

### STORAGE OF CARAVANS

Available at £500 including VAT per year for persons paying yearly in advance from April or £15 including VAT per week paid one month in advance. We site your caravan ready for arrival. **48 hours** notice required. No covers on stored caravans. Caravans can only be stored if in full working order. See management for advice on wheelclamps. No Milenco or Alcotype.

Pulling out to take away £15.

# Trewince Farm HOLIDAY PARK

St. Issey, Wadebridge, Cornwall PL27 7RL

Tel: 01208 812830

[www.trewincefarm-holidaypark.co.uk](http://www.trewincefarm-holidaypark.co.uk)

email: [enquiries@trewincefarm-holidaypark.co.uk](mailto:enquiries@trewincefarm-holidaypark.co.uk)



## TARIFF and BOOKING CONDITIONS 2024

### TOURING AND CAMPING TARIFF 2024

PRICES PER NIGHT	2 person + unit Super Deluxe Pitch	2 person + unit Super Superior Pitch	2 person + unit Superior Pitch	2 person + unit Standard Grass Area (High season only)	Extra Adult	Child 3-15	Gazebos/ Extra Car	Family Wash room	Dog
Low Season 29/03/2024 to 17/05/2024	£31.00	£30.00	£28.00	-	£5.00	£4.50	£1.50	£3.00	£3.00
Mid Season 18/05/2024 to 12/07/2024	£33.00	£32.00	£30.00	-	£5.50	5.00	£1.50	£3.00	£3.00
High Season 13/07/2024 to 30/08/2024	£37.00	£36.00	£33.00	£25.00	£6.00	£5.50	£1.50	£3.00	£3.00
Mid Season 31/08/2024 to 04/10/2024	£33.00	£32.00	£30.00	-	£5.50	£4.50	£1.50	£3.00	£3.00
Low Season 05/10/2024 to 19/10/2024	£31.00	£30.00	£28.00	-	£5.00	£4.50	£1.50	£3.00	£3.00

#### STANDARD GRASS AREA

- Non electric

#### SUPERIOR PITCH Orange on Map

- Grass Pitch, free electric, water and hook-up.

#### SUPER SUPERIOR Grey on Map

- Spacious grass pitch with country views, free electric, water and hook-up.

#### HORSESHOE SUPER DELUXE Pink on Map

- Spacious super deluxe hard standing pitch. Level. Waste drainage, free electric, water & hook-up. No pup tents allowed.

#### DISABLED EN-SUITE & FAMILY WASHROOM

- Deposit £10 to collect keys from Reception.

#### ALL ELECTRICAL HOOK-UPS, MAX. 10 AMPS

**ALWAYS SET UP AS INSTRUCTED. STRICTLY NO WASHING LINES TO BE ERECTED ON PITCH.**

**OPEN 29th MARCH 2024 until 19th OCTOBER 2024**

**ALL PRICES CORRECT AT TIME OF PRINTING**

Trewince Farm  
HOLIDAY PARK

Holiday Home Spec' Sheet

Nesting in glorious Cornish countryside our superb holiday homes offer stunning views across our farm and into the rolling landscape beyond. We are ideally placed for you to take advantage of several award winning beaches - you can try our 7 bays in 7 days challenge. Should you fancy a break from the beach the Eden Project plus a host of leisure parks, historic towns and attractions are but a short hop away.

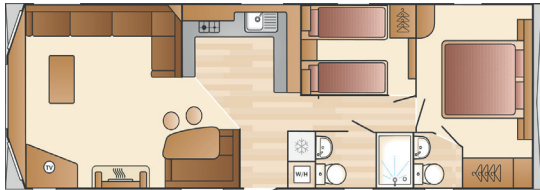
Luxury Facilities are Standard at Trewince

At Trewince Farm Holiday Park we know that our great quality accommodation will help make your holiday special. Tastefully furnished, our modern caravan holiday homes have everything you need to make your stay truly relaxing and memorable. The caravans are sited in a lovingly tended garden area and have their own allotted parking space plus a shared space for visitors.

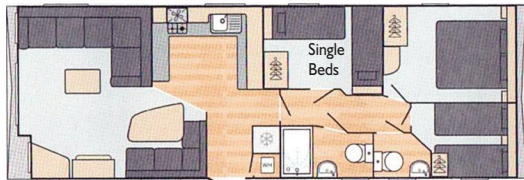
Catering for up to six people each caravan has crockery, cutlery and utensils, microwave, gas oven, fridge, and kettle. The spacious lounge offers a double pull out bed and television. Family shower room fitted with shower, hand basin and dual flush WC. Larger vans have separate WC.

We supply pillows and duvets but we ask guests to provide sheets, pillowcases, duvet covers, towels and tea-towels.

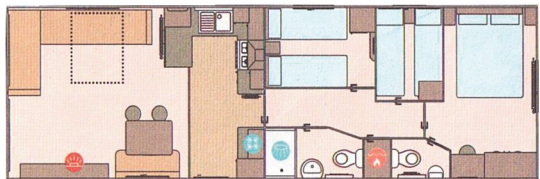
All of our accommodation is non-smoking and strictly pet free.



36x12 - 2 Bed



36x12 - 3 Bed



39x12 - 3 Bed



36x12 - 2 Bed

DIAMOND

PLATINUM

HOLIDAY CARAVAN TARIFF 2024

DIAMOND 2020 with Outside Decking and Patio Doors - 36'x12' 2 Bed Ensuite (30), 3 Bed (27,28,29)		PLATINUM 2022 3 Bed Ensuite 39'x12' (1) 2 Bed - 36'x12' (2)	
Caravan Number	27,28,29,30	Caravan Number	1,2
Dates: <b>Fri-Fri</b>	£	Dates: <b>Sat-Sat</b>	£
29th March	655	30th March	655/645
5th April	690	6th April	690/685
12th April	690	13th April	690/685
19th April	690	20th April	690/685
26th April	655	27th April	655/645
3rd May	655	4th May	655/645
10th May	655	11th May	655/645
17th May	655	18th May	655/645
24th May	765	25th May	765/755
31st May	745	1st June	745/735
7th June	745	8th June	745/735
14th June	745	15th June	745/735
21st June	745	22nd June	745/735
28th June	745	29th June	745/735
5th July	745	6th July	745/735
12th July	970	13th July	970/960
19th July	970	20th July	970/960
26th July	970	27th July	970/960
2nd August	970	3rd August	970/960
9th August	970	10th August	970/960
16th August	970	17th August	970/960
23rd August	970	24th August	970/960
30th August	745	31st August	745/735
6th Sept-4th Oct	560	7th Sept-5th Oct	560/560
11th October	560	12th October	560/560
18th October	655	19th October	655/655

Trewince Farm  
HOLIDAY PARK

# Pool Rules

**DO NOT**  
smoke, drink alcohol or  
bring glass in the pool area

**DO NOT**  
use inflatables, balls,  
toys or body boards  
in the pool

**DO NOT**  
bring bikes, skateboards etc  
into the pool area

**DO NOT**  
wear wetsuits in the pool

**DO NOT**  
allow dogs into the pool area

**DO** shower before  
entering the pool

**DO** use authorised swimming aids  
where necessary

Relax, have fun, keep safe  
and consider others

**PLEASE BE AWARE  
THERE IS NO  
LIFEGUARD IN  
ATTENDANCE AT  
THIS POOL**

OPEN 24th MAY 2024 - CLOSE SEPTEMBER 2024